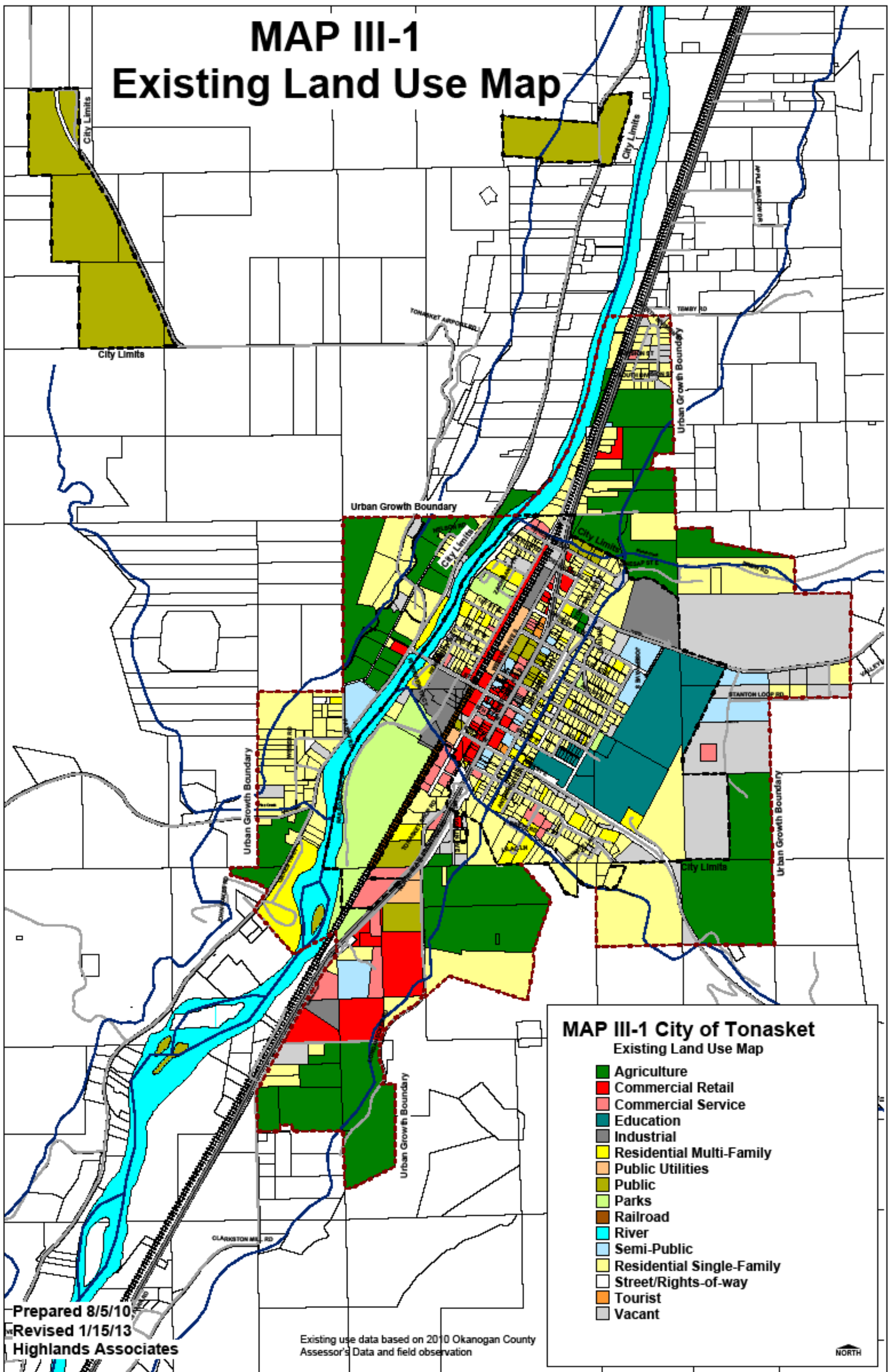


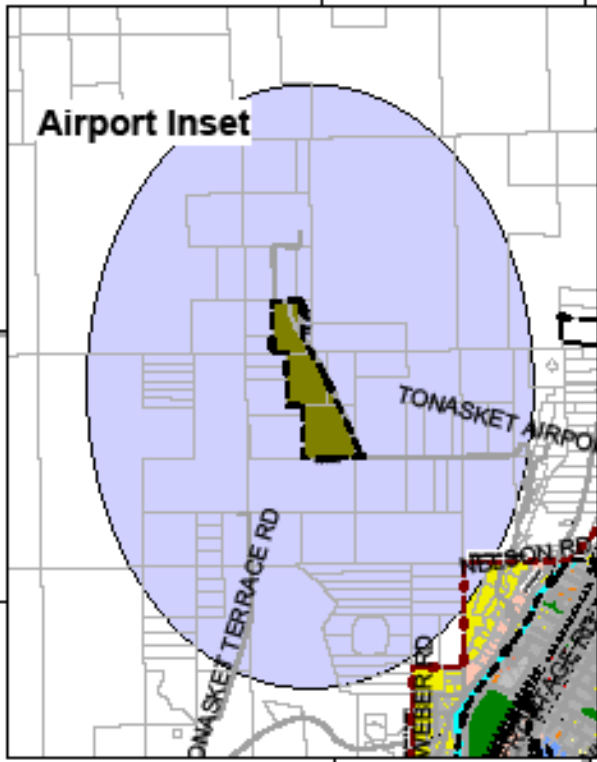
**CITY OF TONASKET  
COMPREHENSIVE PLAN  
MAP APPENDIX  
Adopted  
November 26, 2013**

# MAP III-1 Existing Land Use Map



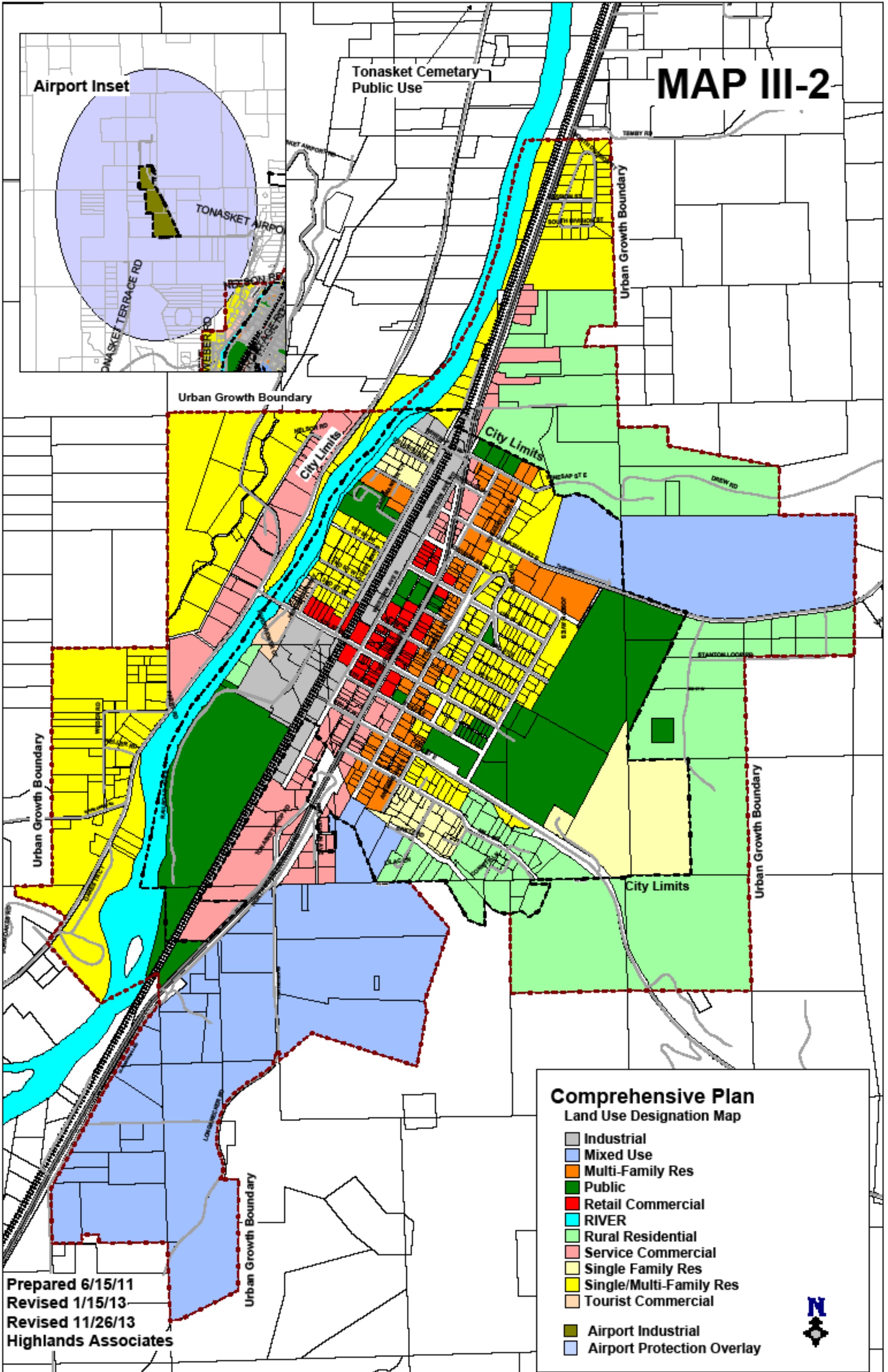
# MAP III-2

Airport Inset



Tonasket Cemetary  
Public Use

Urban Growth Boundary



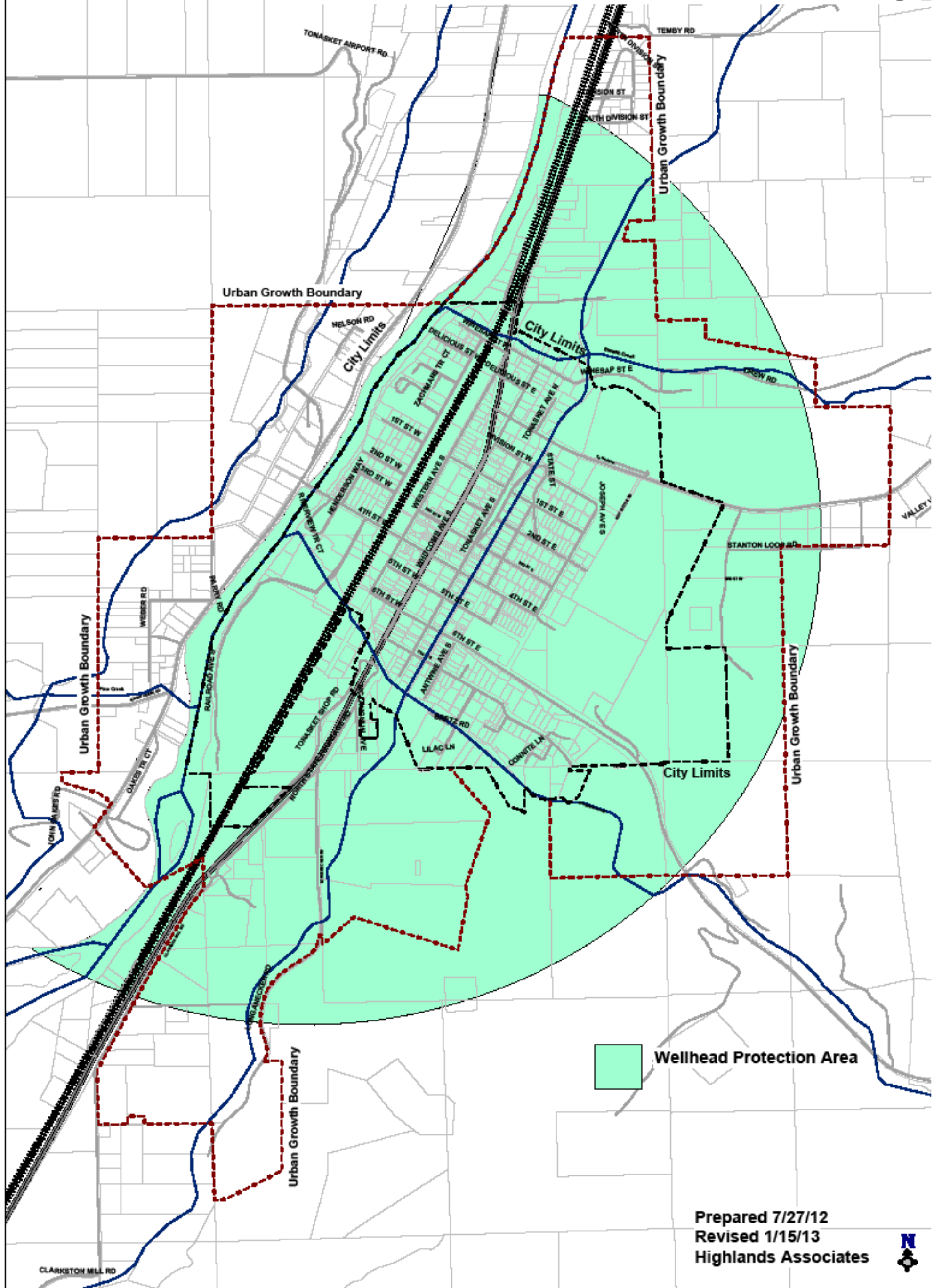
## Comprehensive Plan Land Use Designation Map

- Industrial
- Mixed Use
- Multi-Family Res
- Public
- Retail Commercial
- RIVER
- Rural Residential
- Service Commercial
- Single Family Res
- Single/Multi-Family Res
- Tourist Commercial
- Airport Industrial
- Airport Protection Overlay

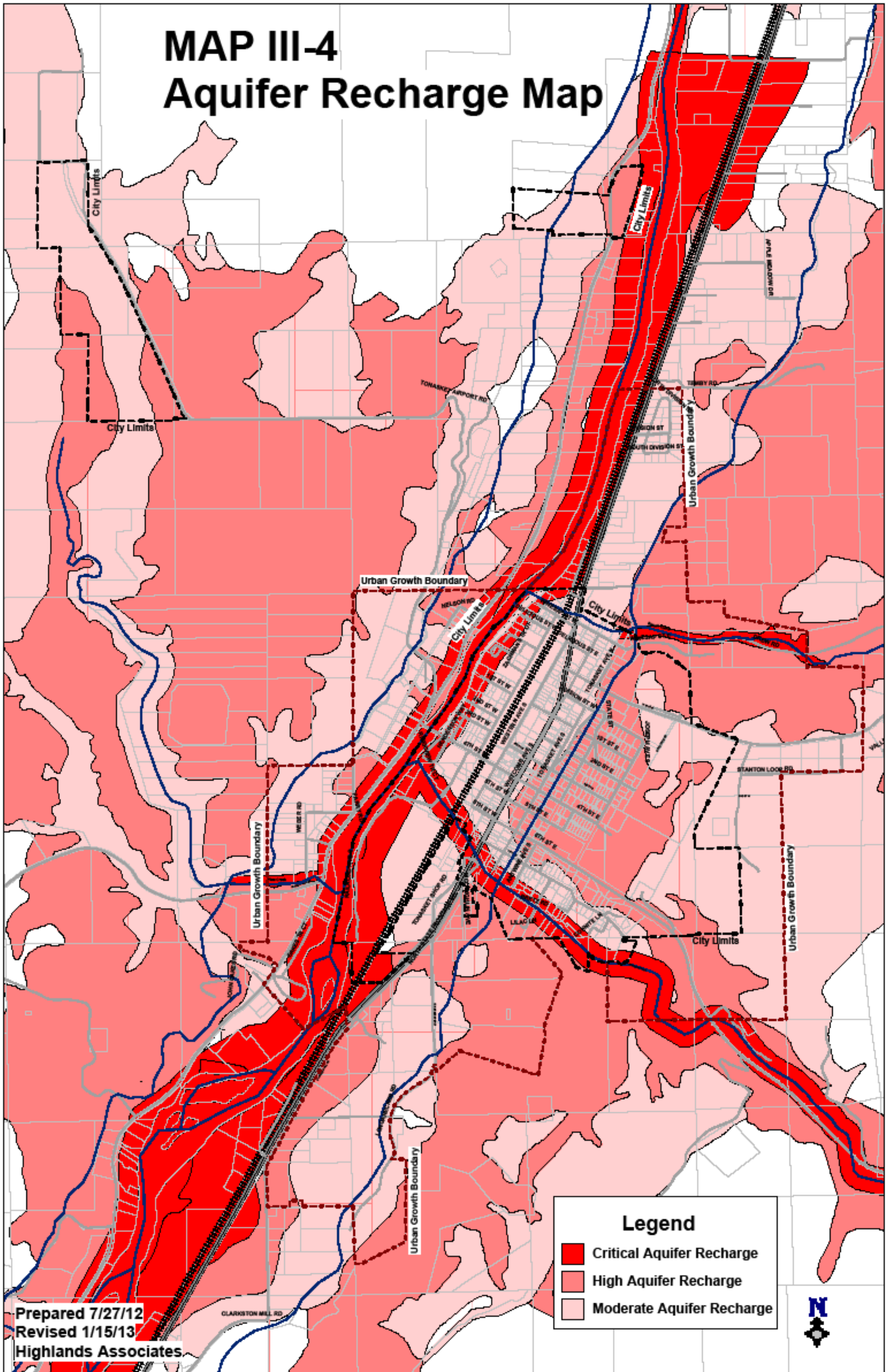
Prepared 6/15/11  
Revised 1/15/13  
Revised 11/26/13  
Highlands Associates



# Map III-3 Critical Areas - Wellhead Protection Area Map

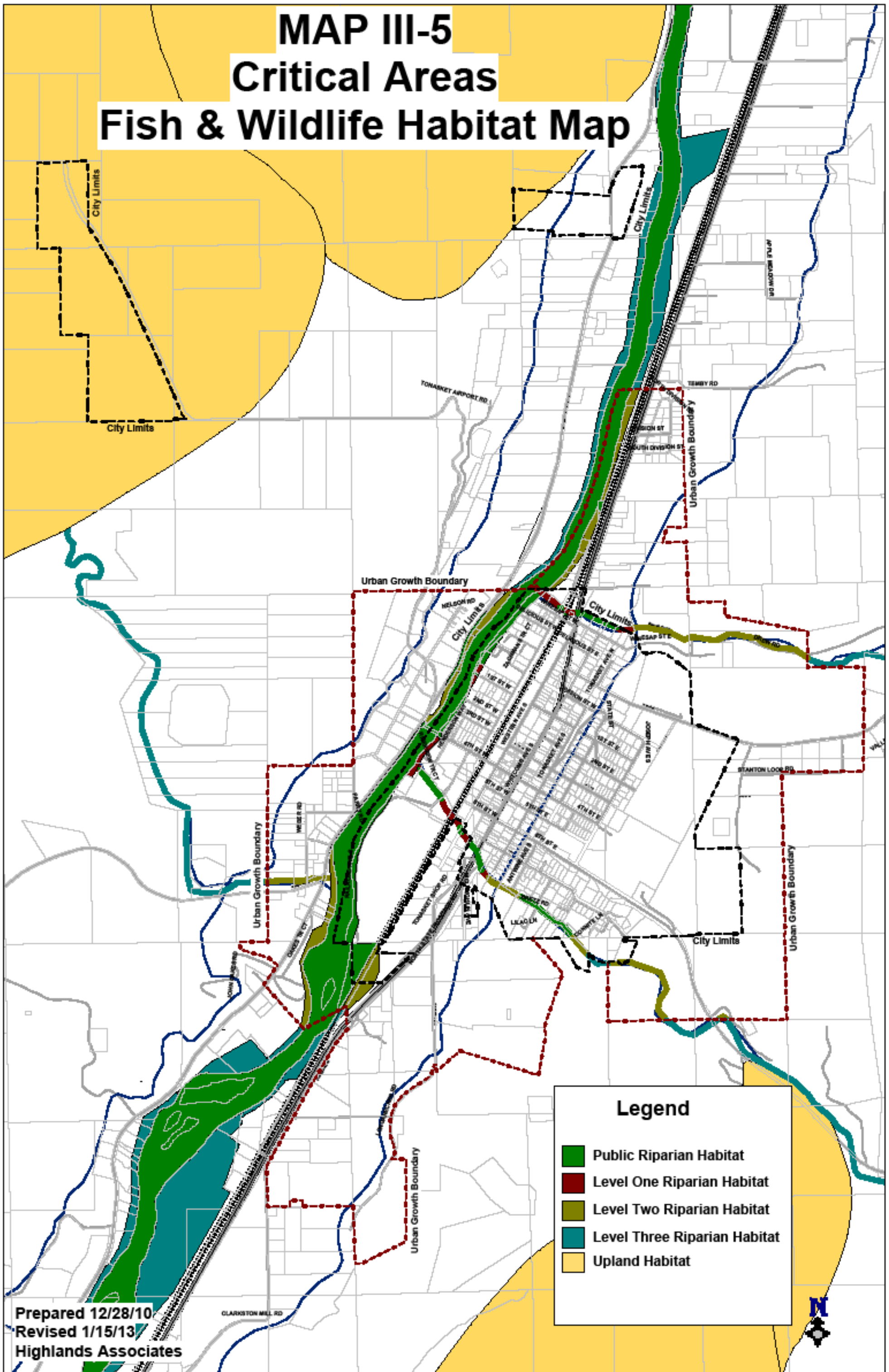


# MAP III-4 Aquifer Recharge Map



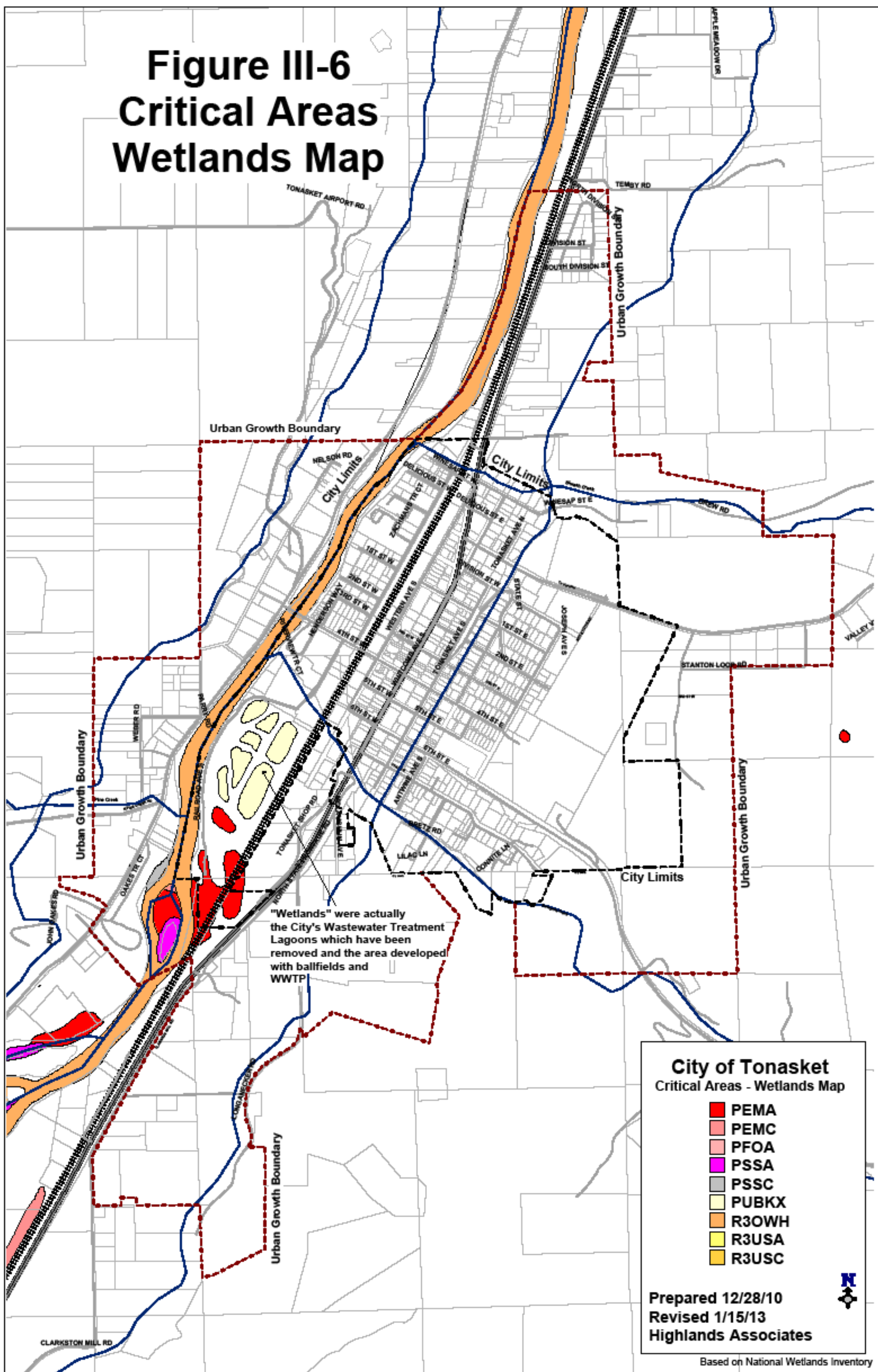


# MAP III-5 Critical Areas Fish & Wildlife Habitat Map



Prepared 12/28/10  
Revised 1/15/13  
Highlands Associates

# Figure III-6 Critical Areas Wetlands Map



**City of Tonasket**  
Critical Areas - Wetlands Map

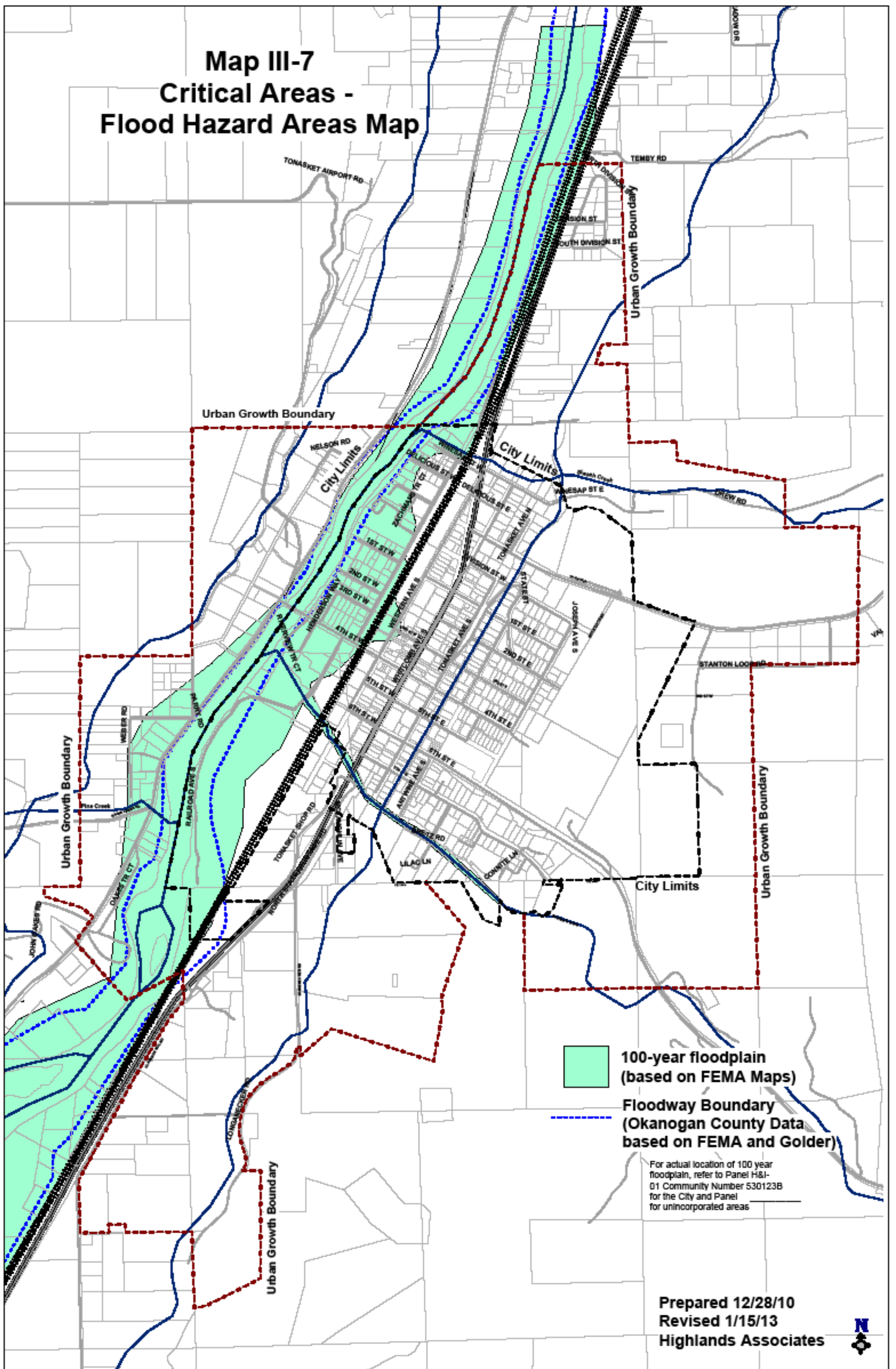
- PEMA
- PEMC
- PFOA
- PSSA
- PSSC
- PUBKX
- R3OWH
- R3USA
- R3USC

Prepared 12/28/10  
Revised 1/15/13  
Highlands Associates

Based on National Wetlands Inventory

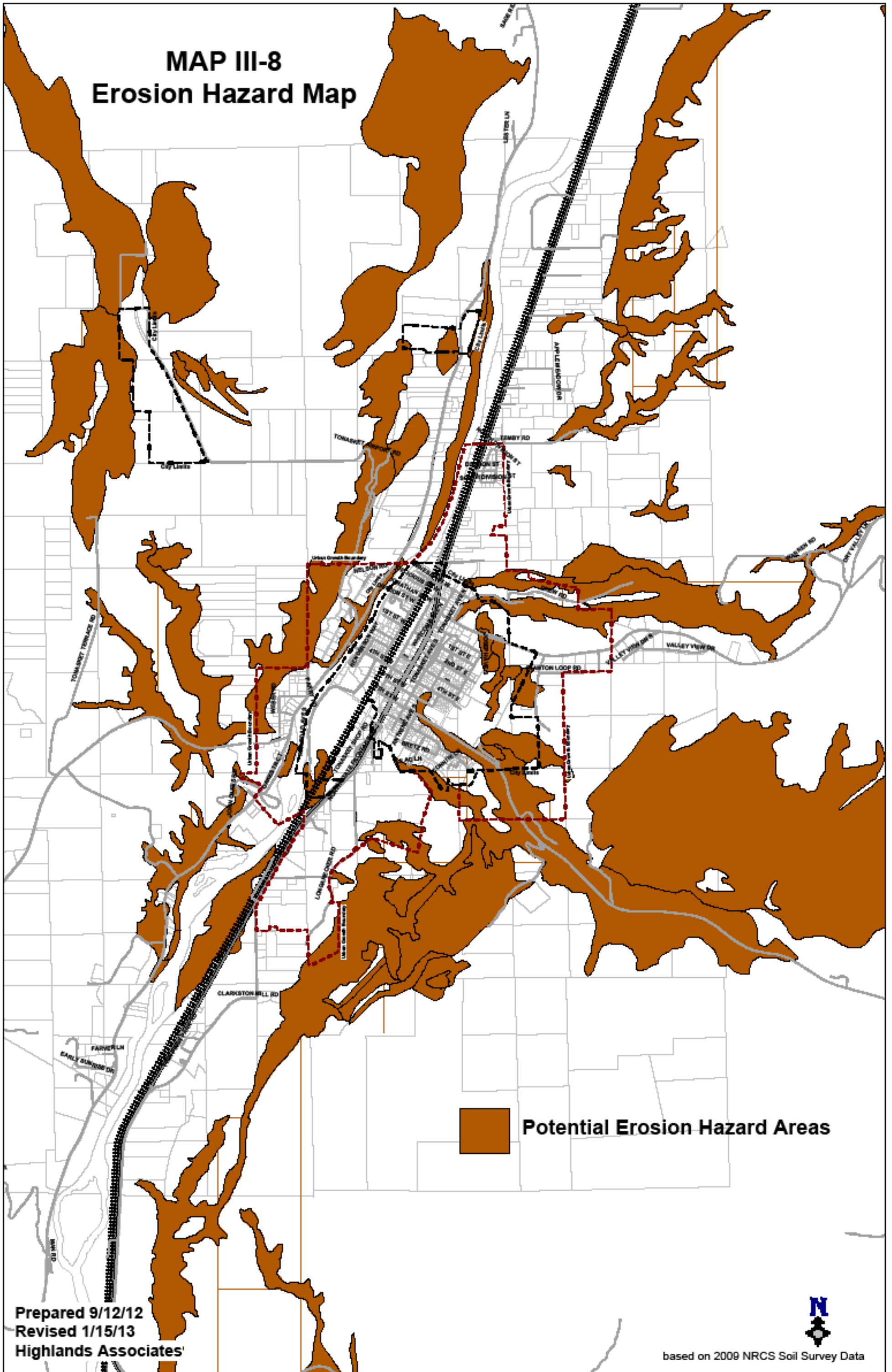


# Map III-7 Critical Areas - Flood Hazard Areas Map





# MAP III-8 Erosion Hazard Map

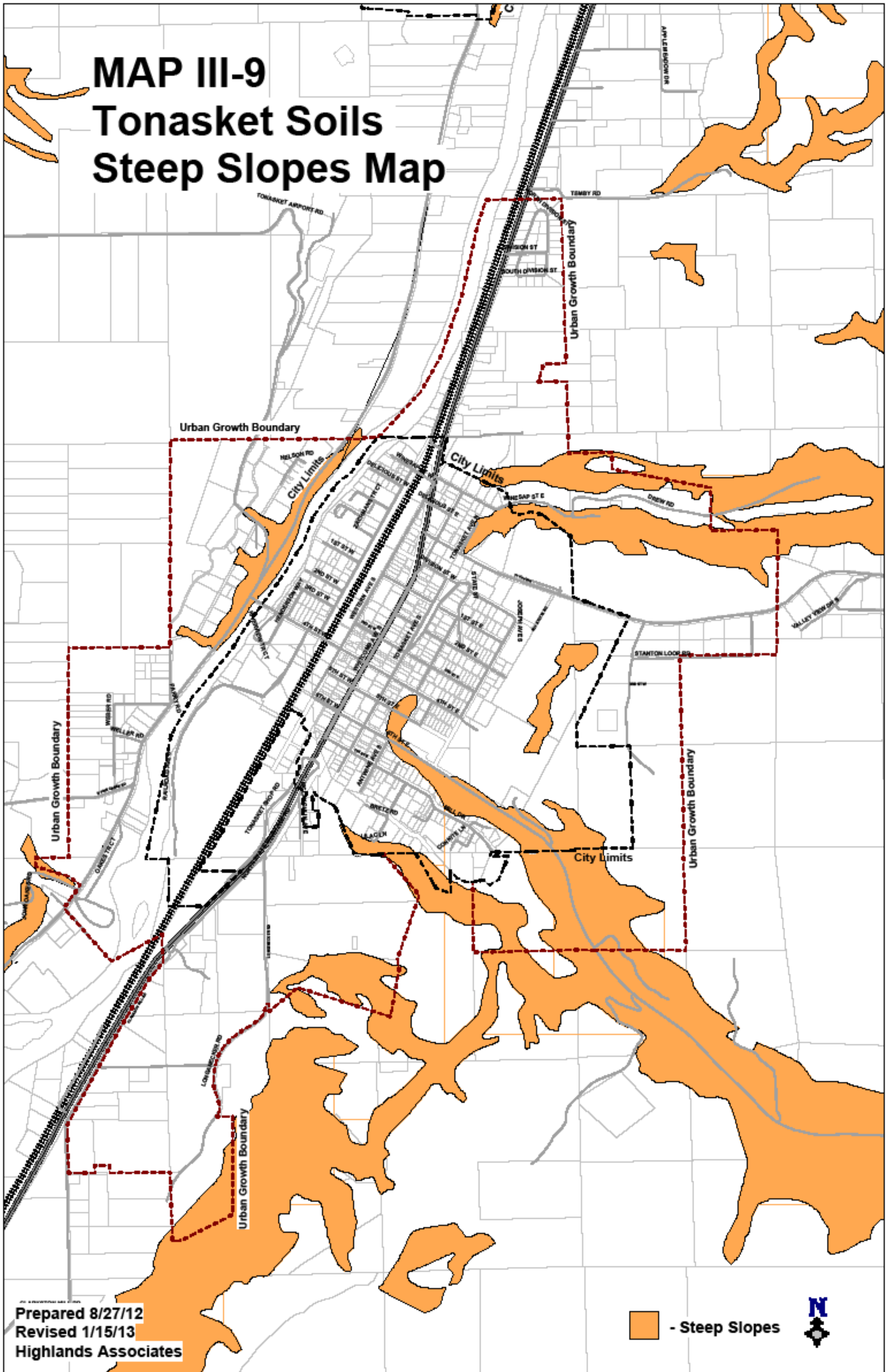


Prepared 9/12/12  
Revised 1/15/13  
Highlands Associates

based on 2009 NRCS Soil Survey Data

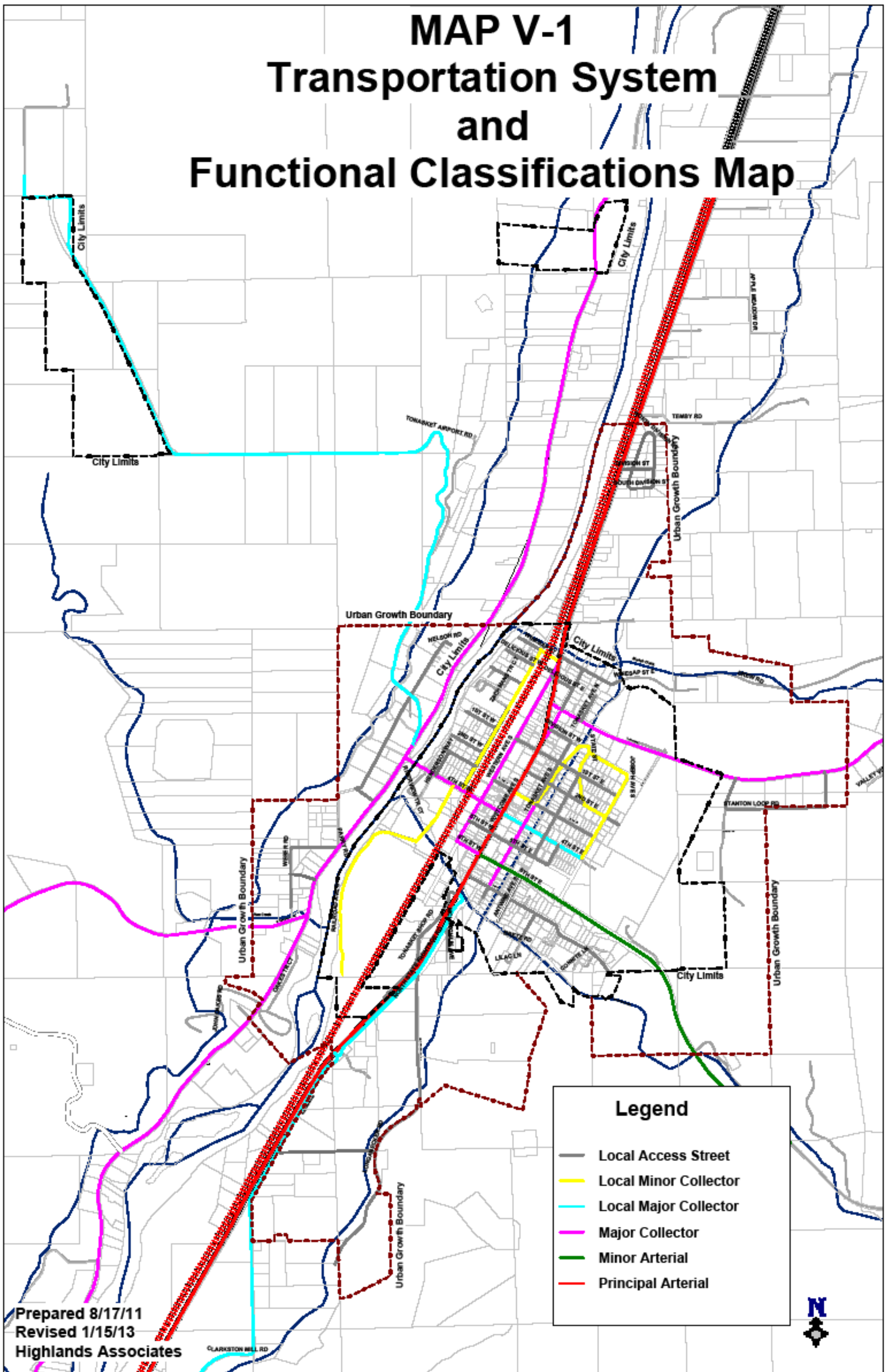


# MAP III-9 Tonasket Soils Steep Slopes Map





# MAP V-1 Transportation System and Functional Classifications Map



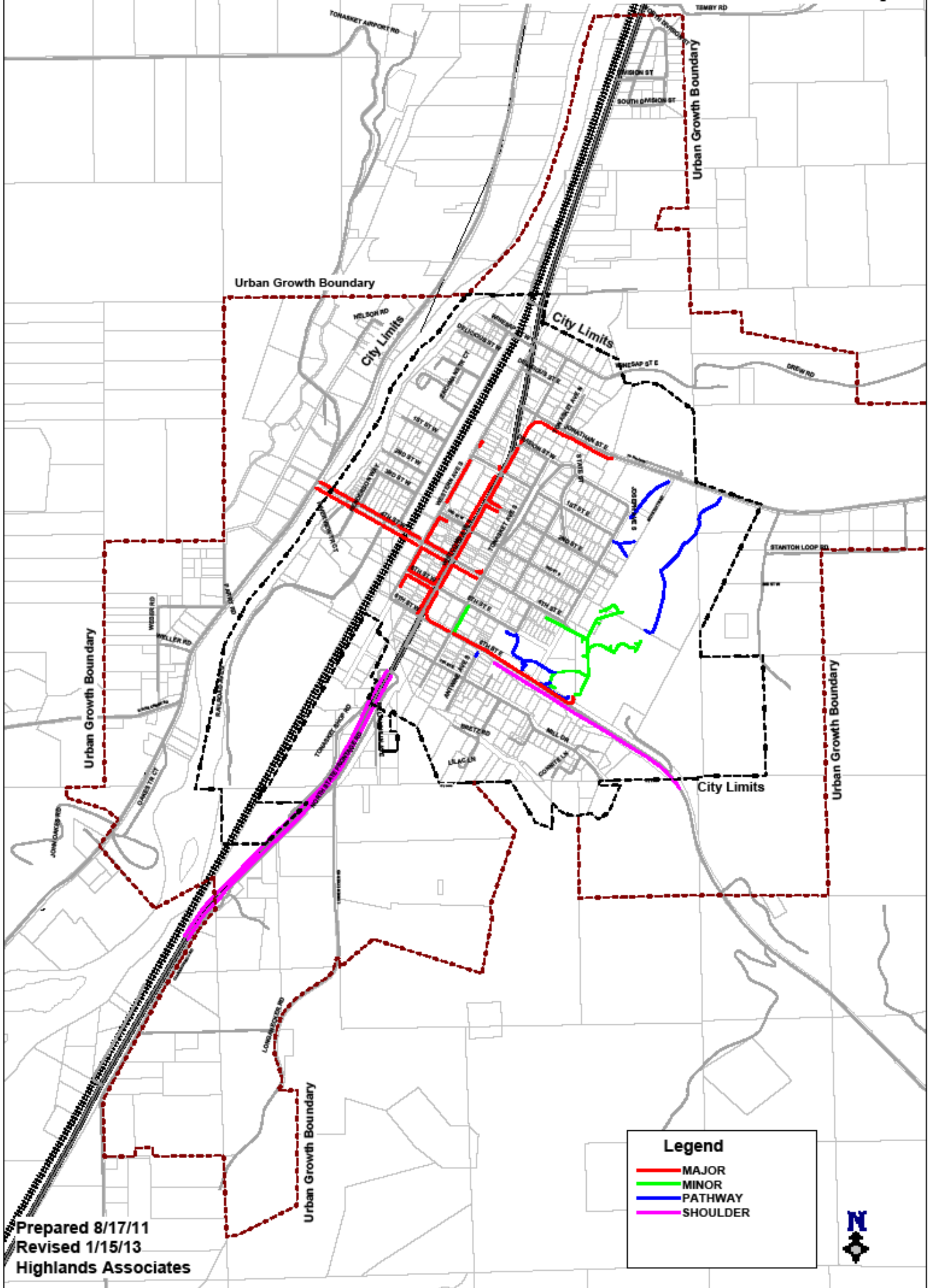
Prepared 8/17/11  
Revised 1/15/13  
Highlands Associates

**Legend**

- Local Access Street
- Local Minor Collector
- Local Major Collector
- Major Collector
- Minor Arterial
- Principal Arterial



# MAP V-2 Non-Motorized Transportation Functional Classifications Map



**Legend**

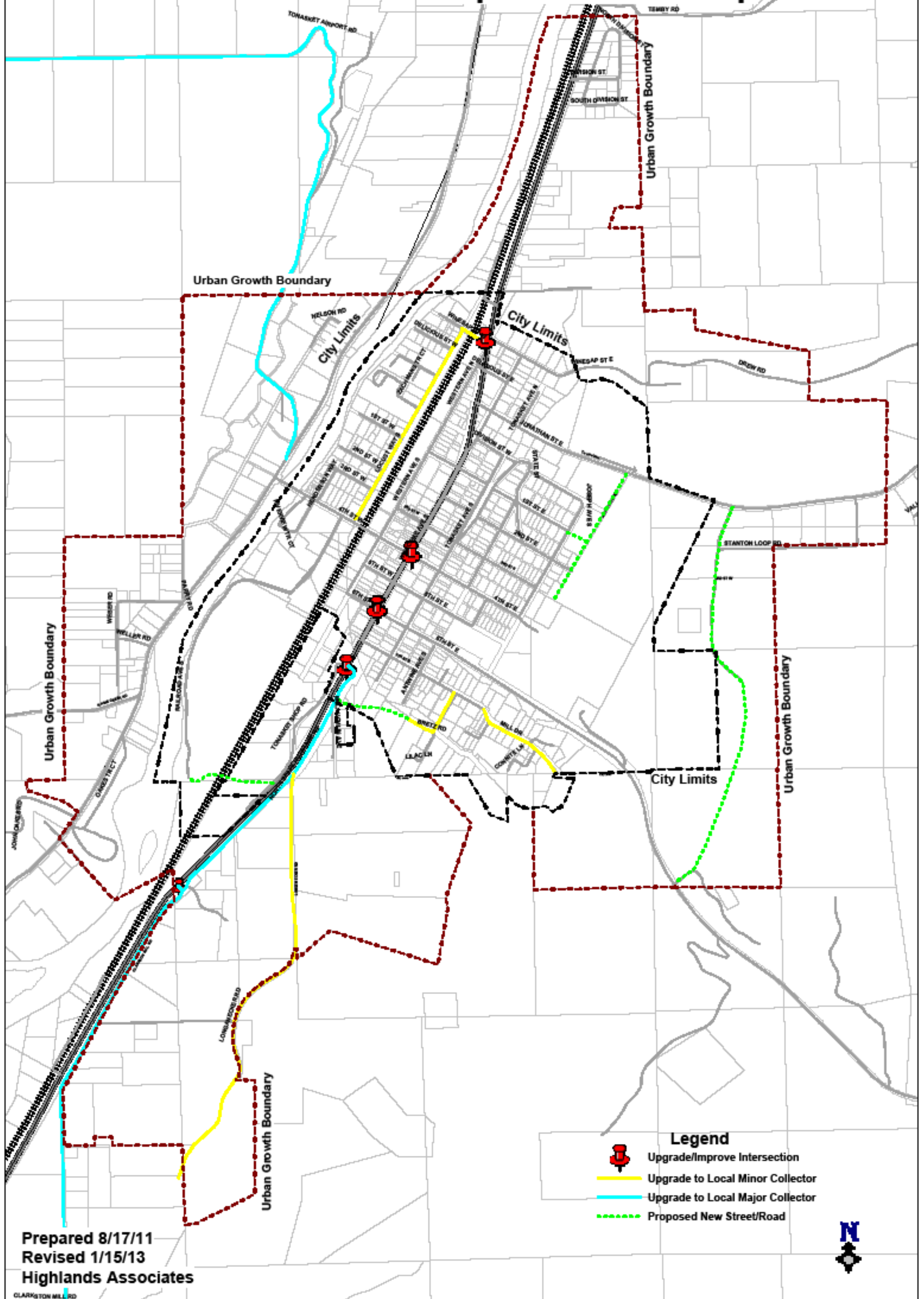
- MAJOR
- MINOR
- PATHWAY
- SHOULDER

Prepared 8/17/11  
Revised 1/15/13  
Highlands Associates





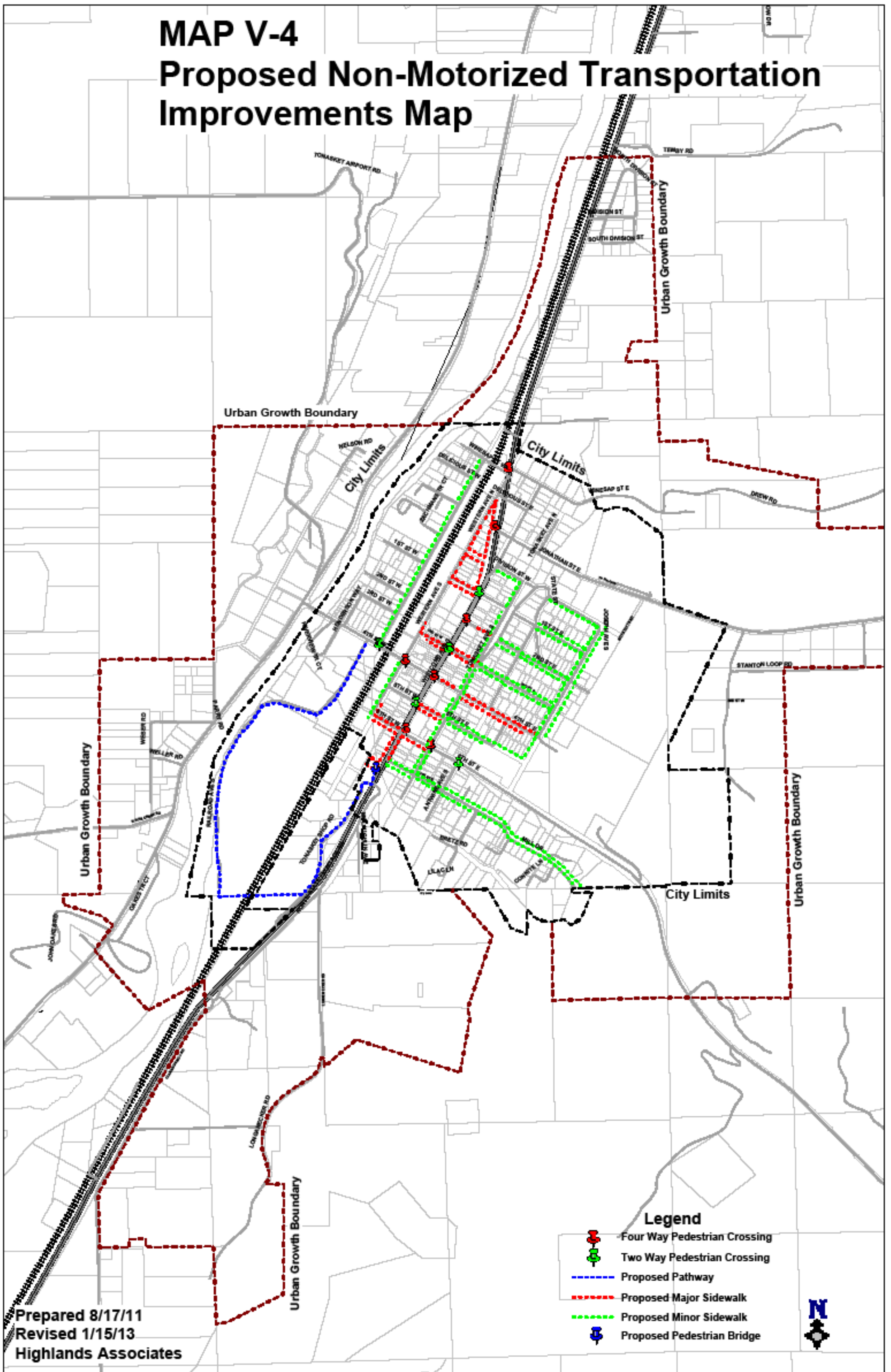
# MAP V-3 Proposed Motorized Transportation Improvements Map



Prepared 8/17/11  
Revised 1/15/13  
Highlands Associates

CLARKSTON MILL RD

# MAP V-4 Proposed Non-Motorized Transportation Improvements Map



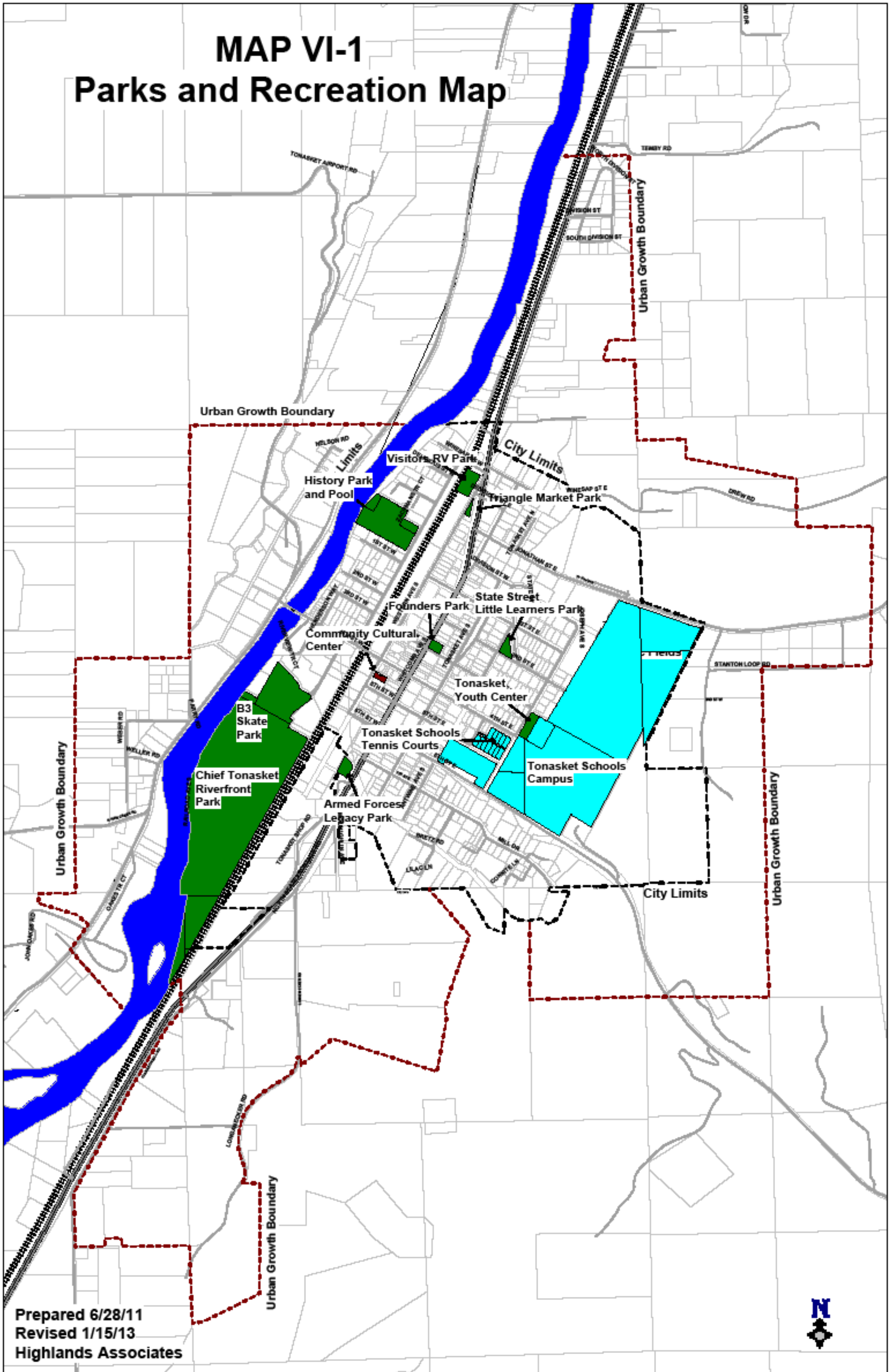
Prepared 8/17/11  
Revised 1/15/13  
Highlands Associates

- Legend**
-  Four Way Pedestrian Crossing
  -  Two Way Pedestrian Crossing
  -  Proposed Pathway
  -  Proposed Major Sidewalk
  -  Proposed Minor Sidewalk
  -  Proposed Pedestrian Bridge





# MAP VI-1 Parks and Recreation Map



Prepared 6/28/11  
Revised 1/15/13  
Highlands Associates

